

ECB20R/25R Centerbound Mount Series

Axial Load Range: 50 to 600 lbs

Radial Load Range: 75 to 325 lbs

Imperial
Data

all dimensions in
inches

Features & Benefits

- Withstands High Shock Forces
- Long Life
- Loading in the Axial or Radial Direction

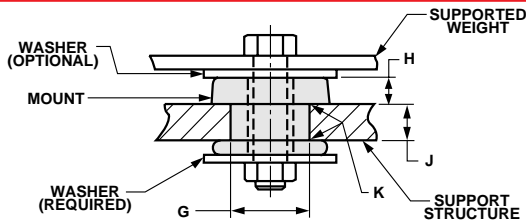
Material Information

- Elastomer: Natural Rubber
- Metals: Low Carbon Steel
Rust Preventative Coating
- Temperature Range: -40°F to 180°F

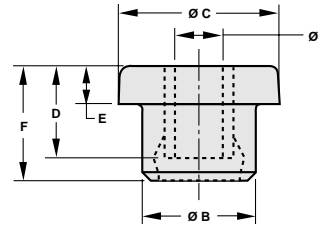
Typical Applications

- Bus Engine Mounts
- Marine Mounts
- Cab Mounts
- Structural Mounts

Mount Installation



Mount Dimensions

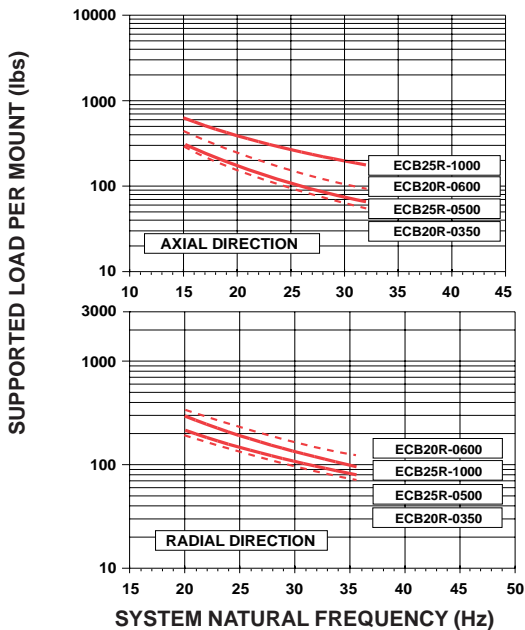


Hardware Options

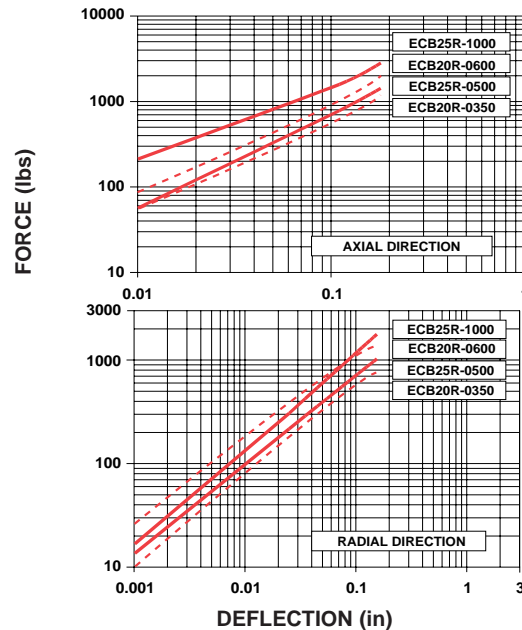
NUMBER OF WASHERS	HARDWARE CODE
0	00
1	01
2	02

MOUNT PART NUMBER	MOUNT DIMENSIONS						INSTALLATION DIMENSIONS				WASHER DIMENSIONS		
	A (in)	B (in)	C (in)	D (in)	E (in)	F (in)	G SOCKET DIAMETER (in)	H INSTALLED HEIGHT (in)	J PLATE THICKNESS (in)	K RADIUS (in)	INSIDE DIAMETER (in)	OUTSIDE DIAMETER (in)	THICKNESS (in)
ECB20R	.53	1.35	2.00	1.31	.53	1.62	1.25	.45	.62	.06	0.52	2.25	0.12
ECB25R	.69	1.62	2.50	1.69	.62	2.00	1.50	.56	.75	.06	0.66	2.88	0.12

LOAD VS. SYSTEM NATURAL FREQUENCY



LOAD VS. DEFLECTION



ECB20R/25R Centerbound Mount Series

Axial Load Range: 275 to 2700 N

Radial Load Range: 300 to 1500 N

Metric
Data

all dimensions in
millimeters

Features & Benefits

- Withstands High Shock Forces
- Long Life
- Loading in the Axial or Radial Direction

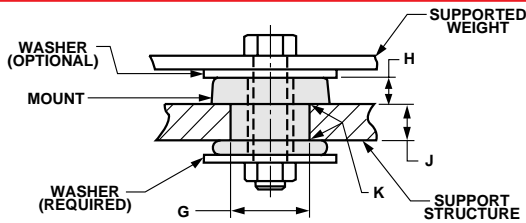
Material Information

- Elastomer: Natural Rubber
- Metals: Low Carbon Steel
Rust Preventative Coating
- Temperature Range: -40°C to 80°C

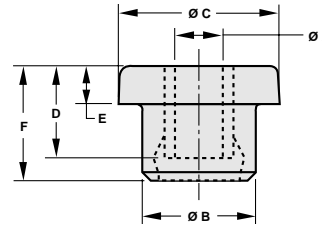
Typical Applications

- Bus Engine Mounts
- Marine Mounts
- Cab Mounts
- Structural Mounts

Mount Installation



Mount Dimensions

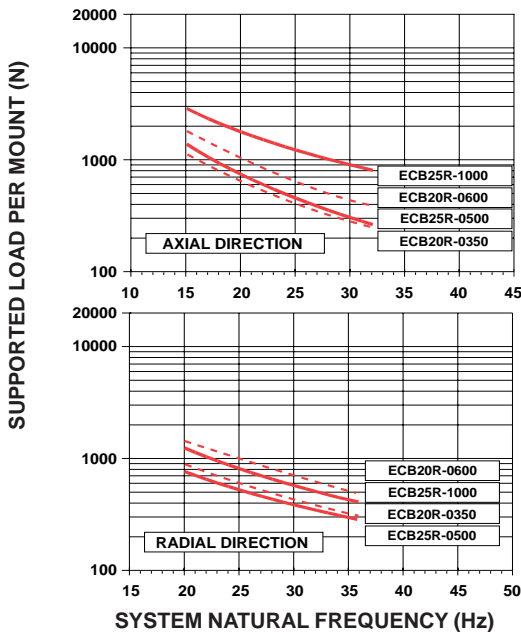


Hardware Options

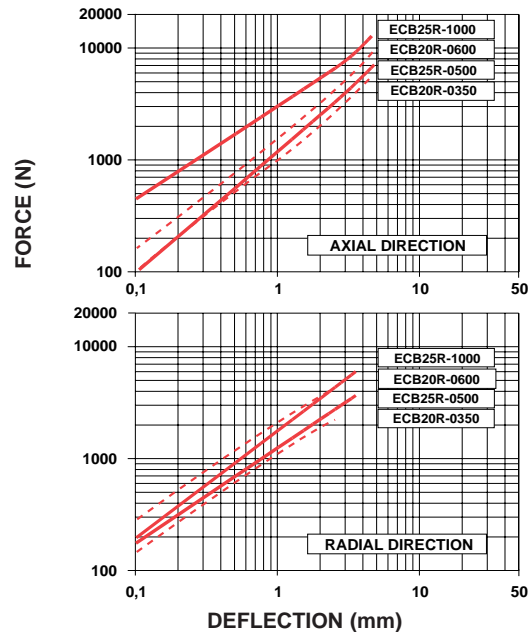
NUMBER OF WASHERS	HARDWARE CODE
0	00
1	01
2	02

MOUNT PART NUMBER	MOUNT DIMENSIONS						INSTALLATION DIMENSIONS				WASHER DIMENSIONS		
	A (mm)	B (mm)	C (mm)	D (mm)	E (mm)	F (mm)	G SOCKET DIAMETER (mm)	H INSTALLED HEIGHT (mm)	J PLATE THICKNESS (mm)	K RADIUS (mm)	INSIDE DIAMETER (mm)	OUTSIDE DIAMETER (mm)	THICKNESS (mm)
ECB20R	13,5	34	51	33,2	13	41	32	11	16	1,5	13,2	57	3,2
ECB25R	17,4	41	64	42,9	16	51	38	14	19	1,5	16,8	73	3,2

LOAD VS. SYSTEM NATURAL FREQUENCY



LOAD VS. DEFLECTION



To place an order, call 1 800 826 2359

For technical assistance, email techsupport@corryrubber.com

