

ECB11R/18R Centerbound Mount Series

Imperial
Data

Axial Load Range: 20 to 175 lbs

Radial Load Range: 20 to 90 lbs

all dimensions in
inches

Features & Benefits

- Withstands High Shock Forces
- Long Life
- Loading in the Axial or Radial Direction

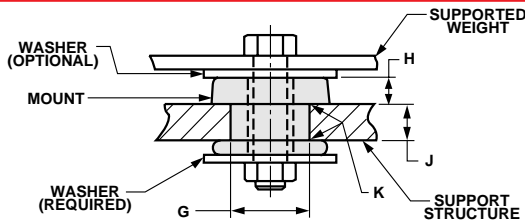
Material Information

- Elastomer: Natural Rubber
- Metals: Low Carbon Steel
Rust Preventative Coating
- Temperature Range: -40°F to 180°F

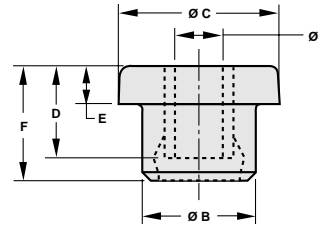
Typical Applications

- Bus Engine Mounts
- Cab Mounts
- Marine Mounts
- Structural Mounts

Mount Installation



Mount Dimensions

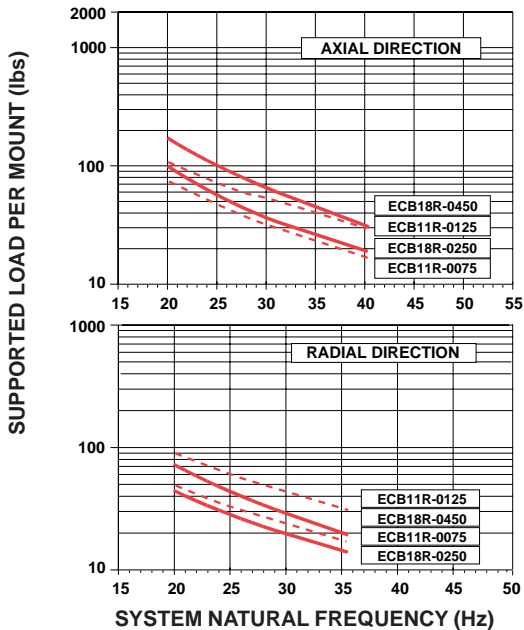


Hardware Options

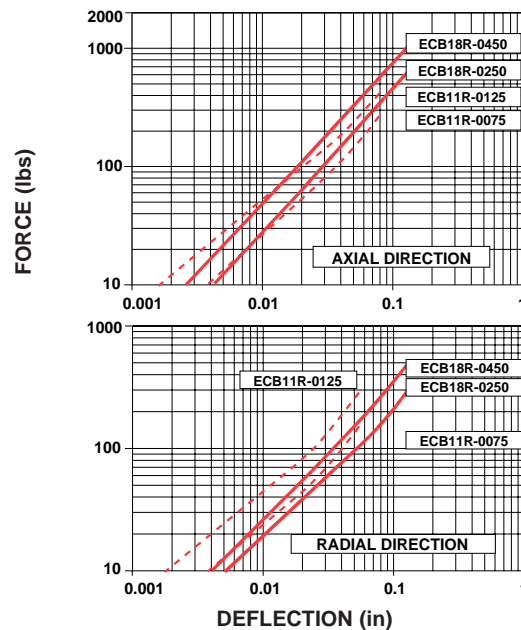
NUMBER OF WASHERS	HARDWARE CODE
0	00
1	01
2	02

MOUNT PART NUMBER	MOUNT DIMENSIONS						INSTALLATION DIMENSIONS				WASHER DIMENSIONS		
	A (in)	B (in)	C (in)	D (in)	E (in)	F (in)	G SOCKET DIAMETER (in)	H INSTALLED HEIGHT (in)	J PLATE THICKNESS (in)	K RADIUS (in)	INSIDE DIAMETER (in)	OUTSIDE DIAMETER (in)	THICKNESS (in)
ECB11R	.40	.81	1.09	.62	.22	1.00	.75	.21	.31	.06	0.40	1.25	0.12
ECB18R	.53	1.24	1.75	1.00	.41	1.25	1.12	.38	.38	.06	0.52	2.00	0.12

LOAD VS. SYSTEM NATURAL FREQUENCY



LOAD VS. DEFLECTION



ECB11R/18R Centerbound Mount Series

Axial Load Range: 70 to 1500 N

Radial Load Range: 70 to 500 N

Metric
Data

all dimensions in
millimeters

Features & Benefits

- Withstands High Shock Forces
- Long Life
- Loading in the Axial or Radial Direction

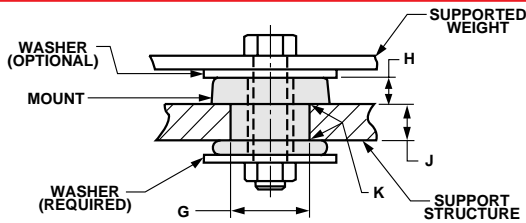
Material Information

- Elastomer: Natural Rubber
- Metals: Low Carbon Steel
Rust Preventative Coating
- Temperature Range: -40°C to 80°C

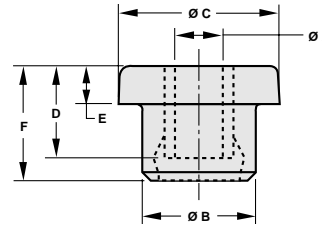
Typical Applications

- Bus Engine Mounts
- Marine Mounts
- Cab Mounts
- Structural Mounts

Mount Installation



Mount Dimensions

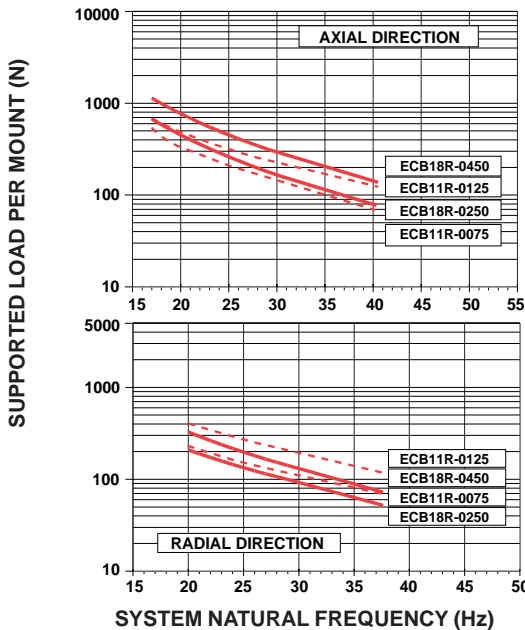


Hardware Options

NUMBER OF WASHERS	HARDWARE CODE
0	00
1	01
2	02

MOUNT PART NUMBER	MOUNT DIMENSIONS						INSTALLATION DIMENSIONS				WASHER DIMENSIONS		
	A (mm)	B (mm)	C (mm)	D (mm)	E (mm)	F (mm)	G SOCKET DIAMETER (mm)	H INSTALLED HEIGHT (mm)	J PLATE THICKNESS (mm)	K RADIUS (mm)	INSIDE DIAMETER (mm)	OUTSIDE DIAMETER (mm)	THICKNESS (mm)
ECB11R	10,2	21	28	15,9	6	25	19	5	8	1,5	10,2	32	3,2
ECB18R	13,5	31	44	25,4	10	32	28	10	10	1,5	13,2	50	3,2

LOAD VS. SYSTEM NATURAL FREQUENCY



LOAD VS. DEFLECTION

