

EST56N Stud Mount Series

Axial Load Range: 60 to 260 lbs

Radial Load Range: 6 to 40 lbs

all dimensions in
inches

Imperial
Data

Features & Benefits

- Prevents Damage to Sensitive Equipment
- Reduces Transmission of Structure Borne Noise
- Loading in the Axial or Radial Direction

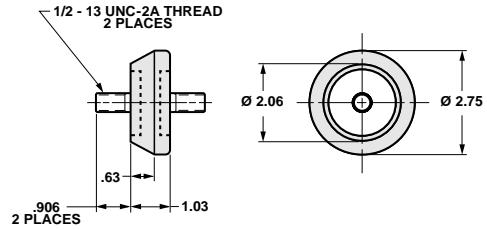
Material Information

- Elastomer: Neoprene
- Metals: Low Carbon Steel
Rust Preventative Coating
- Temperature Range: 0°F to 200°F

Typical Applications

- Appliances
- Business Machines
- Computers
- Relays

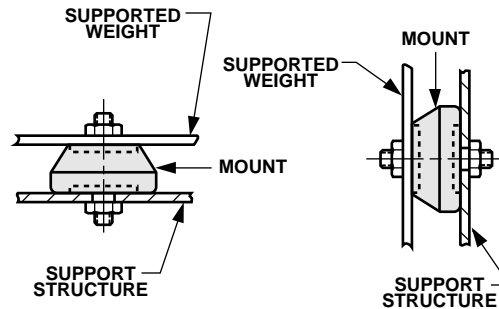
Mount Dimensions



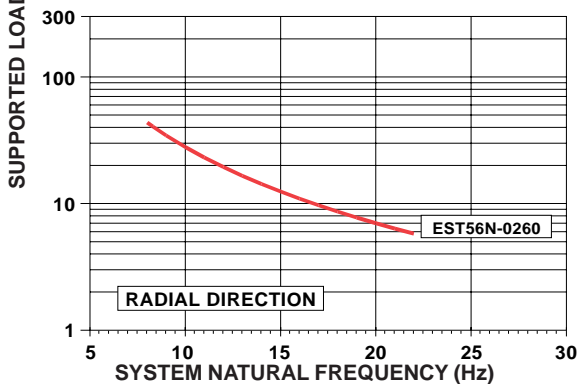
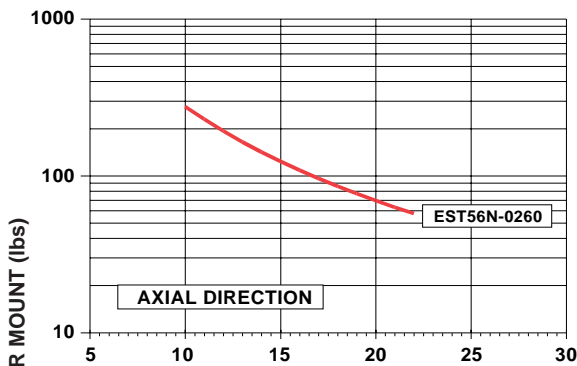
Mount Installation

AXIAL

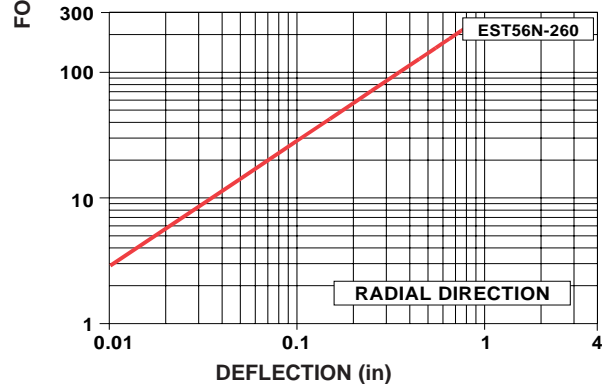
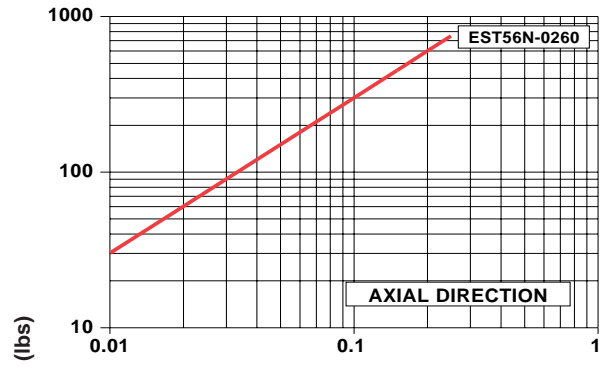
RADIAL



LOAD VS. SYSTEM NATURAL FREQUENCY



LOAD VS. DEFLECTION



To place an order, call 1 800 826 2359

For technical assistance, email techsupport@corryrubber.com

