

EST14N Stud Mount Series

Axial Load Range: 20 to 185 lbs

Radial Load Range: 3 to 45 lbs

Imperial
Data

all dimensions in
inches

Features & Benefits

- Prevents Damage to Sensitive Equipment
- Reduces Transmission of Structure Borne Noise
- Loading in the Axial or Radial Direction

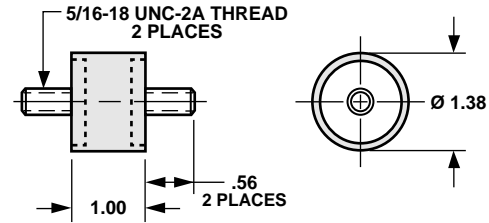
Material Information

- Elastomer: Neoprene
- Metals: Low Carbon Steel
Rust Preventative Coating
- Temperature Range: 0°F to 200°F

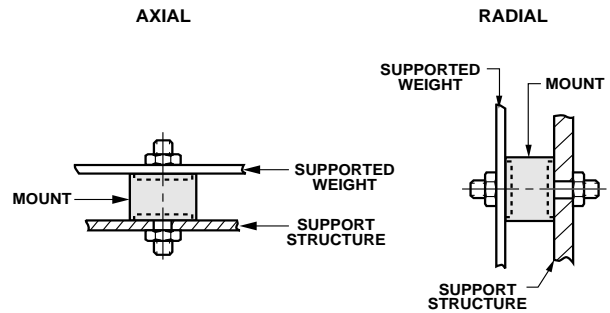
Typical Applications

- Appliances
- Business Machines
- Computers
- Relays

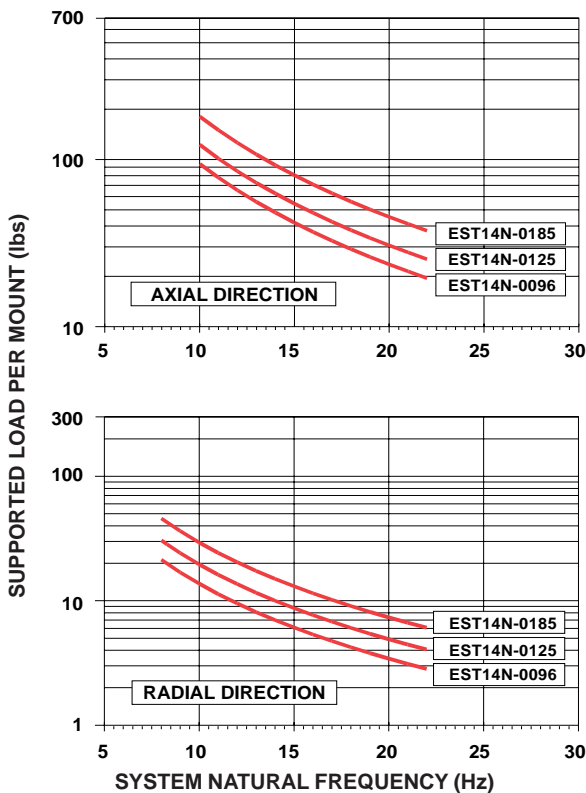
Mount Dimensions



Mount Installation



LOAD VS. SYSTEM NATURAL FREQUENCY



LOAD VS. DEFLECTION

