

# EST10N Stud Mount Series

Axial Load Range: 11 to 110 lbs

Radial Load Range: 1.5 to 22 lbs

Imperial  
Data

all dimensions in  
inches

## Features & Benefits

- Prevents Damage to Sensitive Equipment
- Reduces Transmission of Structure Borne Noise
- Loading in the Axial or Radial Direction

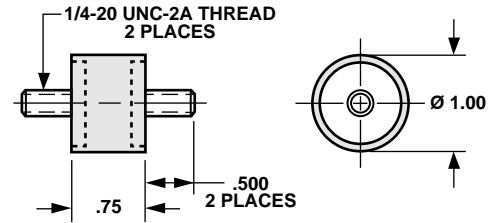
## Material Information

- Elastomer: Neoprene
- Metals: Low Carbon Steel  
Rust Preventative Coating
- Temperature Range: 0°F to 200°F

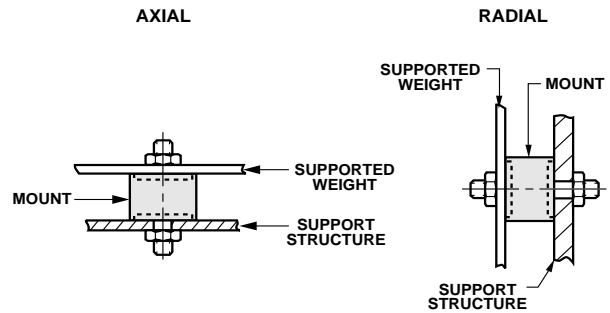
## Typical Applications

- Appliances
- Business Machines
- Computers
- Relays

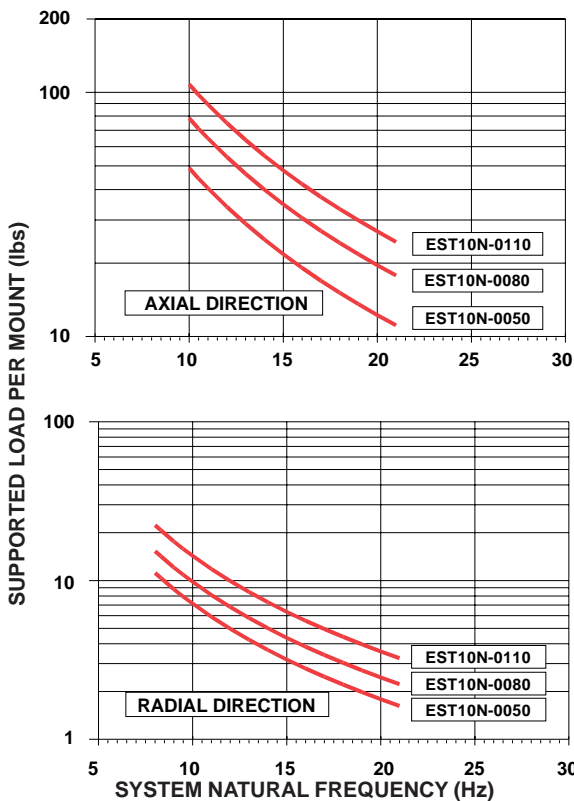
## Mount Dimensions



## Mount Installation



## LOAD VS. SYSTEM NATURAL FREQUENCY



## LOAD VS. DEFLECTION

