

# EPF15R Platform Series

Imperial  
Data

Load Range: 1.5 to 30 lbs

all dimensions in  
inches

## Features & Benefits

- Easy to Install
- Provides Uniform Stress Distribution
- Loading in the Axial Direction
- Minimum Installation Space Required

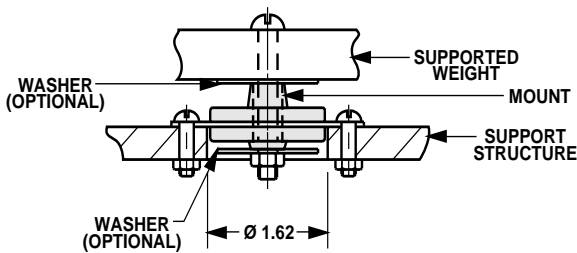
## Material Information

- Elastomer: Natural Rubber
- Metals: Low Carbon Steel  
Rust Preventative Coating
- Temperature Range: -40°F to 180°F

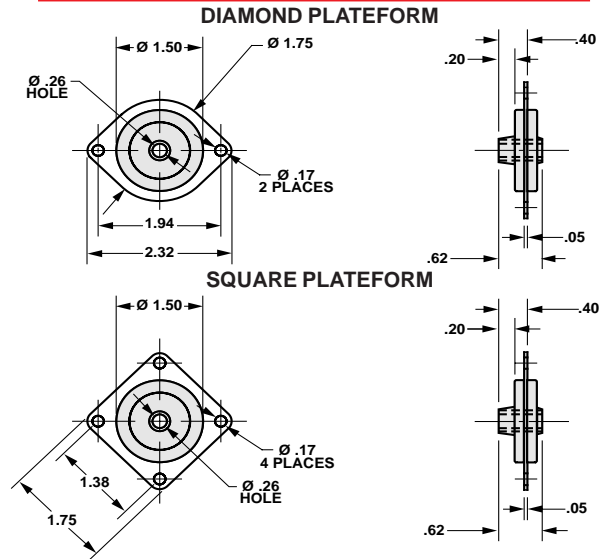
## Typical Applications

- Air Conditioners
- Appliances
- Business Machines
- Electronics
- Small Generators

## Mount Installation



## Mount Dimensions

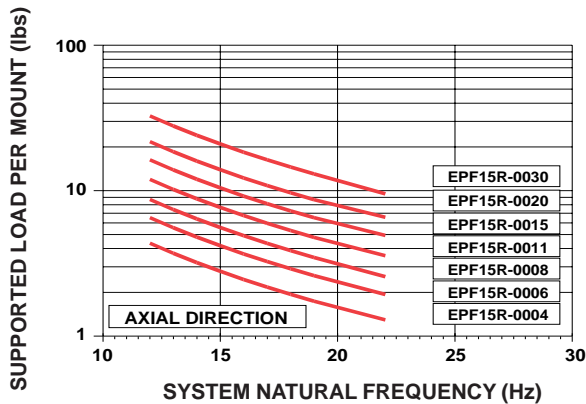


## Hardware Options

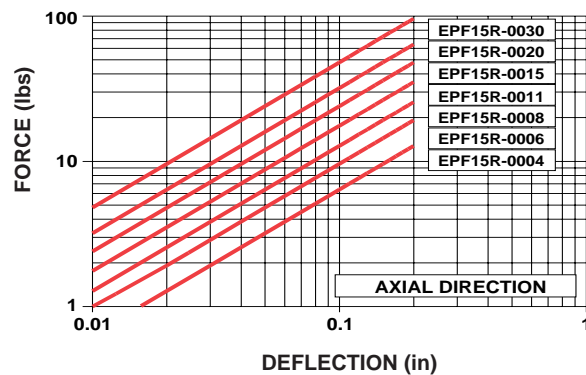
NUMBER OF WASHERS	HARDWARE CODE	
	SQUARE PLATFORM	DIAMOND PLATFORM
0	10	20
1	11	21
2	12	22

WASHER DIMENSIONS		
INSIDE DIAMETER (in)	OUTSIDE DIAMETER (in)	THICKNESS (in)
.26	1.38	.05

## LOAD VS. SYSTEM NATURAL FREQUENCY



## LOAD VS. DEFLECTION



# EPF15R Platform Series

Metric  
Data

Load Range: 6 to 130 N

all dimensions in  
millimeters

## Features & Benefits

- Easy to Install
- Provides Uniform Stress Distribution
- Loading in the Axial Direction
- Minimum Installation Space Required

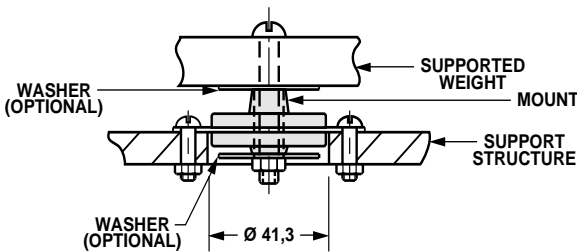
## Material Information

- Elastomer: Natural Rubber
- Metals: Low Carbon Steel  
Rust Preventative Coating
- Temperature Range: -40°C to 80°C

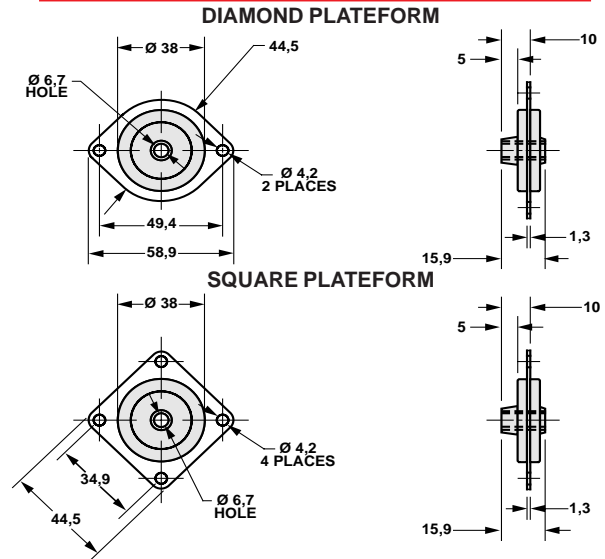
## Typical Applications

- Air Conditioners
- Appliances
- Business Machines
- Electronics
- Small Generators

## Mount Installation



## Mount Dimensions

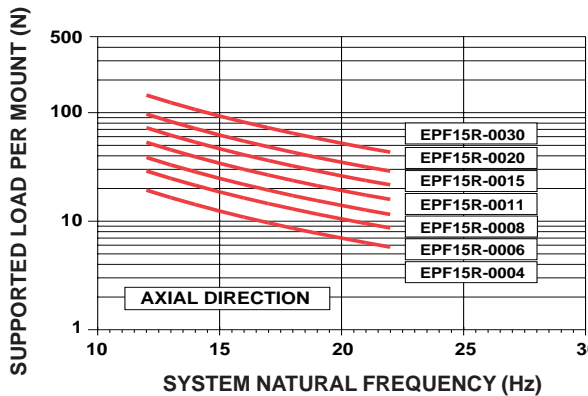


## Hardware Options

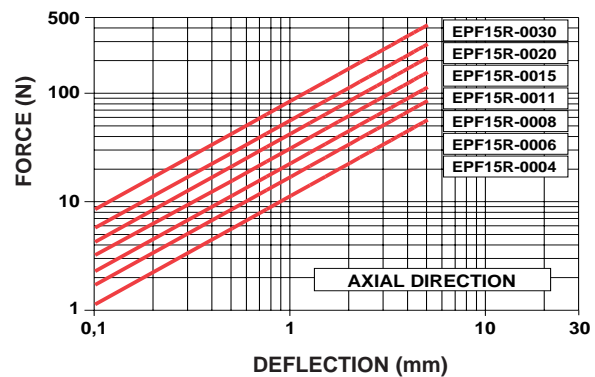
NUMBER OF WASHERS	HARDWARE CODE	
	SQUARE PLATFORM	DIAMOND PLATFORM
0	10	20
1	11	21
2	12	22

WASHER DIMENSIONS		
INSIDE DIAMETER (mm)	OUTSIDE DIAMETER (mm)	THICKNESS (mm)
6,6	35	1,2

## LOAD VS. SYSTEM NATURAL FREQUENCY



## LOAD VS. DEFLECTION



To place an order, call 1 800 826 2359

For technical assistance, email [techsupport@corryrubber.com](mailto:techsupport@corryrubber.com)