

ECB30R/37R Centerbound Mount Series

Axial Load Range: 110 to 1500 lbs

Radial Load Range: 60 to 800 lbs

Imperial
Data

all dimensions in
inches

Features & Benefits

- Withstands High Shock Forces
- Long Life
- Loading in the Axial or Radial Direction

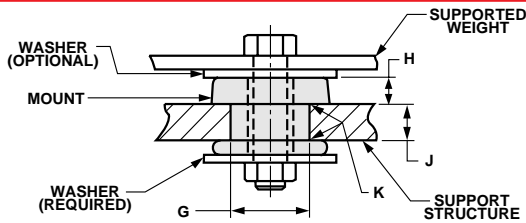
Material Information

- Elastomer: Natural Rubber
- Metals: Low Carbon Steel
Rust Preventative Coating
- Temperature Range: -40°F to 180°F

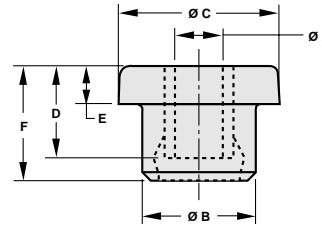
Typical Applications

- Bus Engine Mounts
- Marine Mounts
- Cab Mounts
- Structural Mounts

Mount Installation



Mount Dimensions

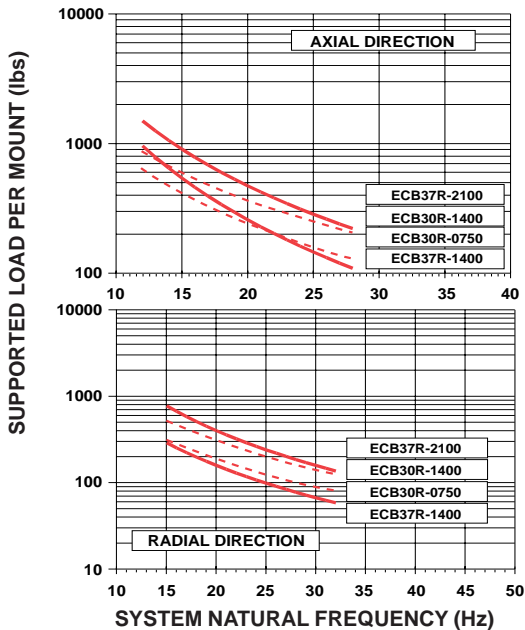


Hardware Options

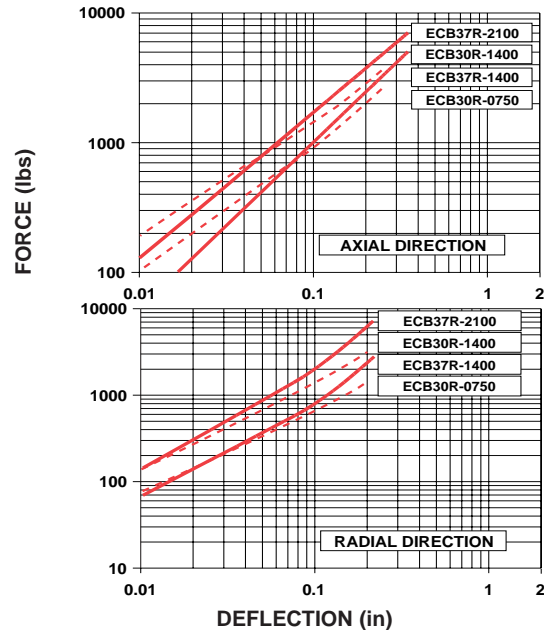
NUMBER OF WASHERS	HARDWARE CODE
0	00
1	01
2	02

MOUNT PART NUMBER	MOUNT DIMENSIONS						INSTALLATION DIMENSIONS				WASHER DIMENSIONS		
	A (in)	B (in)	C (in)	D (in)	E (in)	F (in)	G SOCKET DIAMETER (in)	H INSTALLED HEIGHT (in)	J PLATE THICKNESS (in)	K RADIUS (in)	INSIDE DIAMETER (in)	OUTSIDE DIAMETER (in)	THICKNESS (in)
ECB30R	.69	1.98	2.98	2.00	.81	2.22	1.81	.71	.93	.06	.64	3.50	.19
ECB37R	.81	2.23	3.74	2.00	1.00	2.48	2.00	.94	.75	.12	.80	4.25	.19

LOAD VS. SYSTEM NATURAL FREQUENCY



LOAD VS. DEFLECTION



ECB30R/37R Centerbound Mount Series

Axial Load Range: 500 to 6700 N

Radial Load Range: 250 to 3200 N

Metric
Data

all dimensions in
millimeters

Features & Benefits

- Withstands High Shock Forces
- Long Life
- Loading in the Axial or Radial Direction

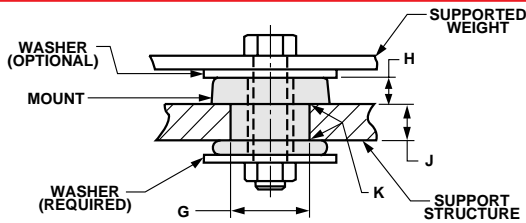
Material Information

- Elastomer: Natural Rubber
- Metals: Low Carbon Steel
Rust Preventative Coating
- Temperature Range: -40°C to 80°C

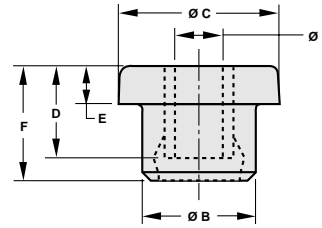
Typical Applications

- Bus Engine Mounts
- Marine Mounts
- Cab Mounts
- Structural Mounts

Mount Installation



Mount Dimensions

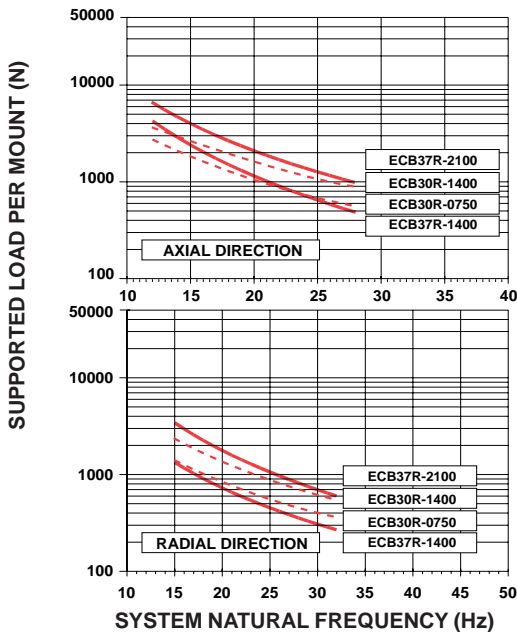


Hardware Options

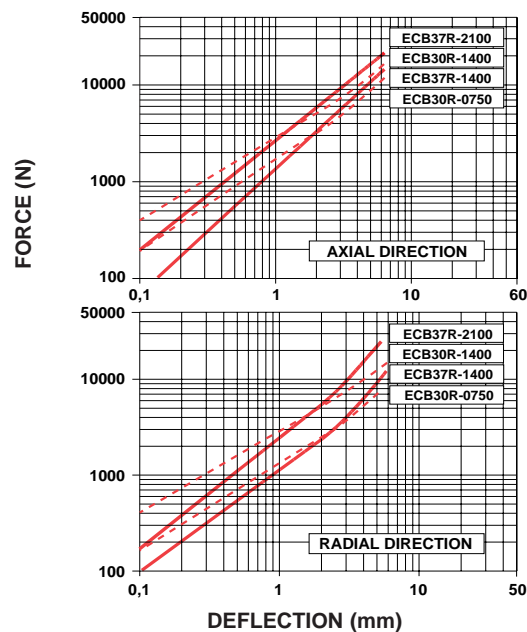
NUMBER OF WASHERS	HARDWARE CODE
0	00
1	01
2	02

MOUNT PART NUMBER	MOUNT DIMENSIONS						INSTALLATION DIMENSIONS				WASHER DIMENSIONS		
	A (mm)	B (mm)	C (mm)	D (mm)	E (mm)	F (mm)	G SOCKET DIAMETER (mm)	H INSTALLED HEIGHT (mm)	J PLATE THICKNESS (mm)	K RADIUS (mm)	INSIDE DIAMETER (mm)	OUTSIDE DIAMETER (mm)	THICKNESS (mm)
ECB30R	17,4	50	76	50,8	21	56	46	18	23	1,5	16,2	89	4,8
ECB37R	20,6	57	95	50,8	25,4	63	51	24	19	3	20,3	108	4,8

LOAD VS. SYSTEM NATURAL FREQUENCY



LOAD VS. DEFLECTION



To place an order, call 1 800 826 2359

For technical assistance, email techsupport@corryrubber.com

